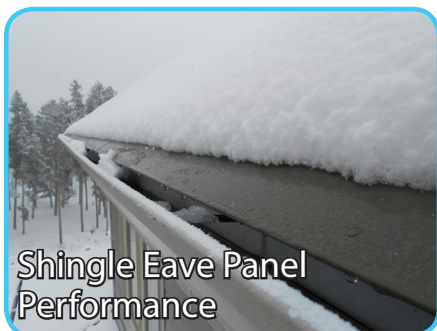


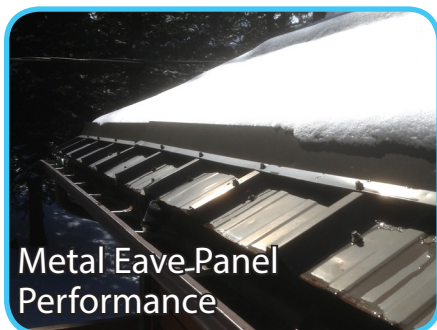


# Alpine Ice Solutions

## Roof Ice Melt Systems



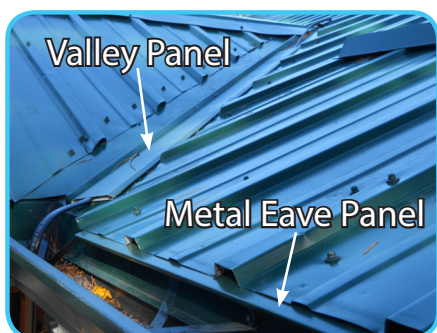
Shingle Eave Panel  
Performance



Metal Eave Panel  
Performance



Shingle Eave Panel  
with Valley Panel



Valley Panel

Metal Eave Panel

**Alpine Ice Solutions** Heated Roof Panels are designed to prevent icicles and ice dams from forming on roof eaves and valleys. Designed and produced exclusively by Alpine Ice Solutions, the system integrates commercial grade, Self Regulating Heating Cable into Metal Heating Panels, utilizing 100% of the available heat energy. The system was developed as an effective alternative to the poor performance of traditionally used "zig-zag" pattern heat cable systems.

Heated Eave Panels prevent ice dams and icicles from forming on the edge of a roof by heating the entire drip edge of the roof. Heated Valley Panels prevent ice dams from forming in roof valleys. Heated Utility Panels are used to prevent ice formation along walls, chimneys, skylights, etc, and also used to provide a snowmelt path from a downspout discharge onto a lower roof. Self Regulating Heat Cable is included with the system for all associated gutter and downspouts to provide continuous melt path to the ground level drainage.

Alpine Ice Solutions Heated Roof Panels are designed for all types of roofs including Asphalt Shingle, Metal, Concrete Tile, Wood Shake, and others. The system can be installed in new construction, before the final roofing material is installed, or easily retrofitted onto existing roofs. The Heat Panels are installed without any damage or modification to the existing roof material.

### EXCLUSIVE FEATURES

- **AFFORDABLE** - Less than half of the installed price of competing brands, due to our low material cost and simplified installation process.
- **ENERGY EFFICIENT** - Uses up to 75% less energy than traditional competing systems. Our system requires less Heating Cable than other methods, and 100% of the heat energy is utilized by the Heat Panels.
- **EFFECTIVE** - Complete elimination of icicles and ice dams along the entire roof eave prevents standing water, which can leak through the roof. Self Regulating Heating Cable automatically varies its power output as weather conditions change, increasing power as the temperature drops.
- **RELIABLE** - We offer a limited 10 year manufacturer's warranty for materials. No routine maintenance is required for the life of the system. Commercial grade roofing components assure long useful life. Heating cable is protected from sliding ice and snow.
- **AESTHETICS** - Our Heated Roof Panels blend in with the roof color to provide an aesthetically pleasing look. No unsightly cables lying on the roof. Heating Panels are available with a choice of 32 colors, or Natural Copper.
- **CABLE REPLACEMENT** - At the end of its service life, the Heating Cable can be easily removed and replaced in the field.
- **INSTALLATION** - No cutting of shingles, no roof penetrations, no roof modifications are required. The system can be installed without affecting the existing roof integrity.

## ***Prevent Ice Dams...Permanently!***

# Heated Roof Panel Color Selection Chart

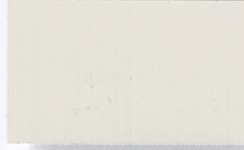
## ENVIRONMENTALLY SMART COLORS - DESIGNED ENERGY EFFICIENT



TERRA COTTA



AGED COPPER



SOLAR WHITE



SANDSTONE



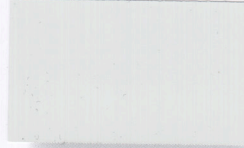
SIERRA TAN



COLONIAL RED



PATINA GREEN



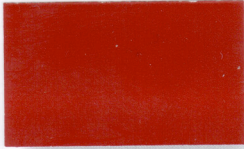
REGAL WHITE



ASH GRAY



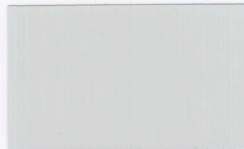
MEDIUM BRONZE



\*REGAL RED



\*HEMLOCK GREEN



STONE WHITE



SLATE GRAY



MANSARD BROWN



\*BURGUNDY



\*HARTFORD GREEN



SLATE BLUE



CHARCOAL GRAY



DARK BRONZE



MATTE BLACK



EVERGREEN



\*REGAL BLUE



\*TEAL

## METALLIC COLORS



\*SILVER



\*COPPER



\*CHAMPAGNE



\*PRE-WEATHERED  
GALVALUME®



ACRYLIC COATED  
GALVALUME®

## NON-PAINTED

## SPECIFICATIONS:

### MATERIAL SELECTION

- 24 Gauge Galvanized Steel, Kynar 500 Painted Finish, available in 32 colors
- CopperPlus Metallic Composite, .021" thick, Natural Copper Surface

### HEATING SYSTEM

- Commercial Grade Self Regulating Heating Cable and Accessories
- 120 VAC, or 208/240/277 VAC
- 8, 12, 13 or 15 watt/ft power output at 32 degrees F.
- UL or CSA listed for roof and gutter deicing

### HEAT PANEL COMPONENTS:

- Shingle Roof Eave Panel: 5' L x 13" W
- Shingle Roof Joint Cover: 4" L x 13" W
- Metal Roof Eave Panel: 5' L x 6" W
- Metal Roof Joint Cover: 4" L x 6" W
- Valley / Utility Panel: 5' L x 3" W

## AUTOMATIC CONTROLS:



Temperature / Snow  
Sensor



Display Panel